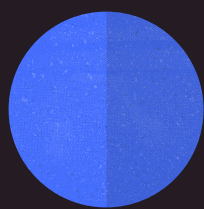
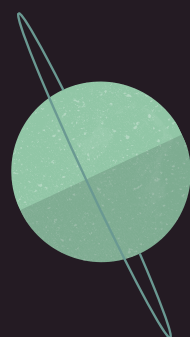


# PLANETEN



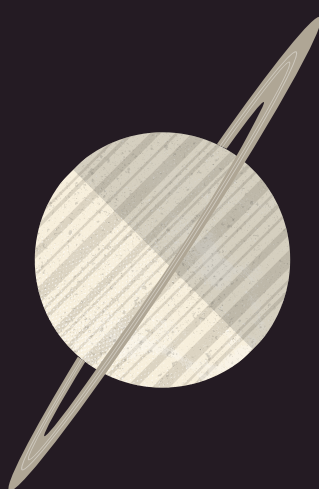
## NEPTUN

Sensibilität, Spiritualität



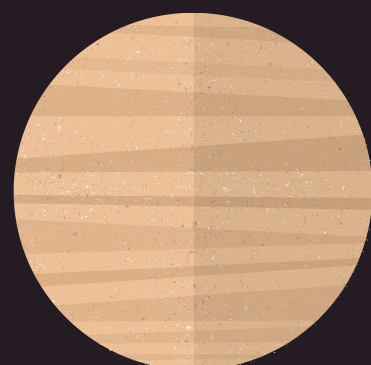
## URANUS

Veränderung,  
Freiheit



## SATURN

Form, Struktur



## JUPITER

Wachstum, Fülle,  
Glück



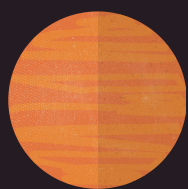
## MARS

Durchsetzung,  
Entscheidung



## CHIRON

Heilung,  
Verwundbarkeit



## VENUS

Liebe,  
Beziehungen



## MERKUR

Kommunikation,  
Gedanken



## PLUTO

Macht, Manipulation,  
Schattenanteile

